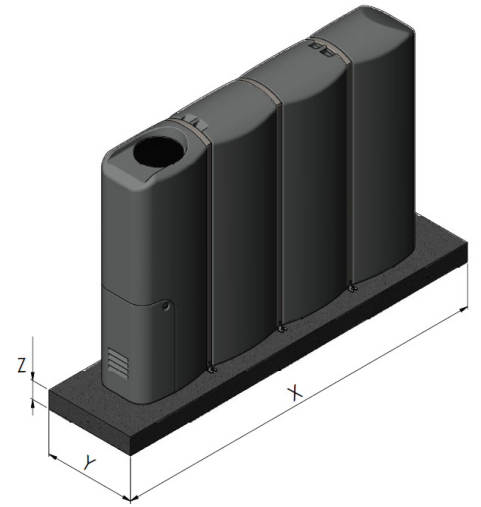


Slimline Installation to meet Seismic Specification (0.39 CDT)

1. Concrete base

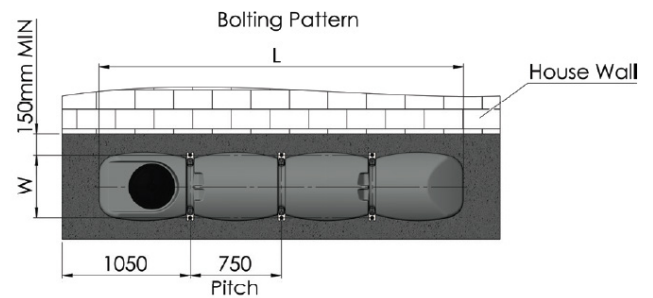
- Concrete must be 20 MPA or higher.
- Reinforced with HD12 bars @ 300mm Centres, 75mm cover.

CAPACITY	X	Y	Z
1000L	2250mm	610mm	150mm
2000L	2250mm	870mm	150mm
3000L	3000mm	870mm	250mm
5000L	3000mm	1210mm	250mm



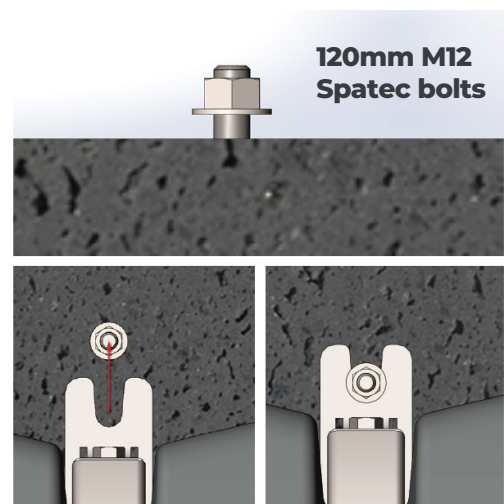
2. Marking

- Mark out the bolting pattern for the Slimline tank onto the concrete pad.
- Allow minimum 150mm between tank and house wall or fence.
- 1000L : W = 320mm
- 2000L : W = 520mm
- 3000L : W = 520mm
- 5000L : W = 860mm



2. Bolting

- Drill the 3 x 18mm holes in concrete for 120mm M12 Spatec bolts closest to house/fence.
- Insert 120mm M12 Spatec bolts and thread on the nut allowing approximately 12mm between the concrete and the underside of the nut.
- Position Slimline tank on the concrete pad and push the tank sideways towards the house wall/fence until the Slimline tank feet are held captive by these nuts.
- Now drill the remaining three bolts on the outside of the Slimline tank, insert and tighten the nuts on the feet of the tank.



Contact our team:

Promax Engineered Plastics Limited
PO Box 749, Kerikeri 0245, New Zealand
T: 0800 77 66 29
E: sales@promax.co.nz