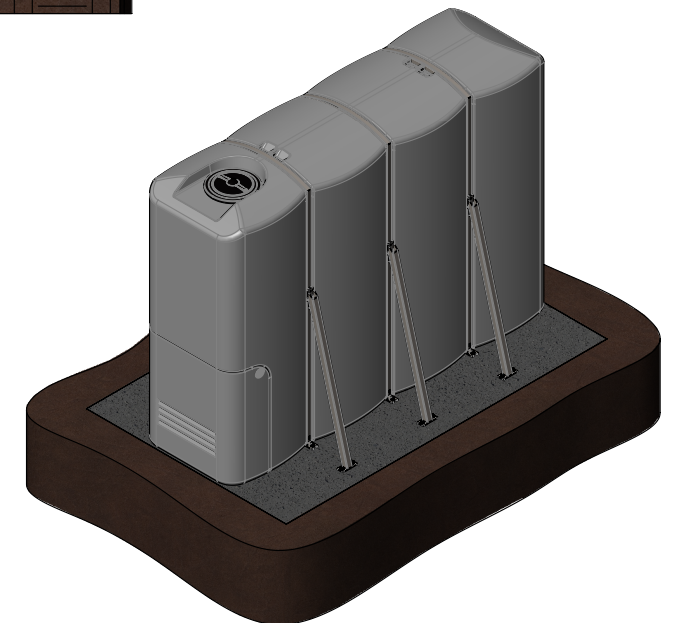
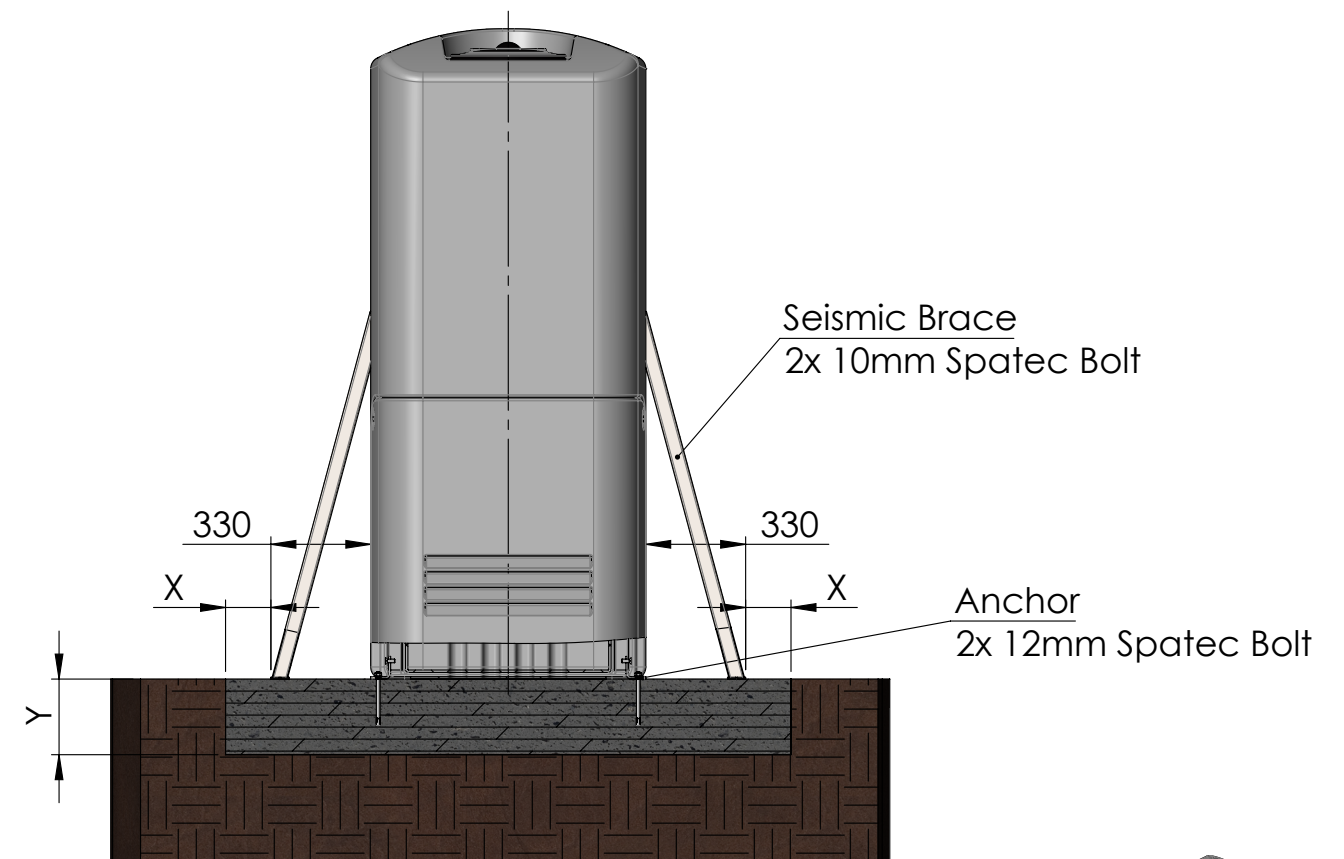


30 MPa Concrete Pad,
reinforced with HD12 @ 300 c/c e.w. 100mm cover


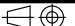


Slimline Tank Size	Seismic Co-efficient	Min Slab Thickness (Y)	Min Edge Distance (X)	Bracing Required
(L)	(CdT)	(mm)	(mm)	
2000	0.32	150	150	Nil
2000	0.75	250	150	One Side
2000	1.1	250	150	Both Sides
3000	0.32	250	150	Nil
3000	0.75	250	150	One Side
3000	1.1	250	150	Both Sides
5000	0.32	250	150	Nil
5000	0.75	250	150	One Side
5000	1.1	250	150	Both Sides

PROPRIETARY AND CONFIDENTIAL

THIS DRAWING AND THE INFORMATION AND TECHNICAL DATA CONTAINED HEREIN ARE THE EXCLUSIVE PROPERTY OF PROMAX PLASTICS AND SHALL BE RETURNED TO THEM UPON REQUEST.

THIS DRAWING CONTAINS PROPRIETARY AND CONFIDENTIAL INFORMATION FOR THIS PROJECT AND IS NOT TO BE MADE AVAILABLE TO 3RD PARTIES WITHOUT THE EXPRESS WRITTEN CONSENT OF PROMAX PLASTICS.

UNLESS OTHERWISE SPECIFIED: DIMENSIONS ARE IN MILLIMETERS SURFACE FINISH: TOLERANCES: LINEAR: ANGULAR:				FINISH:		DEBUR AND BREAK SHARP EDGES		DO NOT SCALE DRAWING		 Promax <small>LIQUID MANAGEMENT SOLUTIONS</small>	
DRAWN				NAME		SIGNATURE		DATE			TITLE: SLIM TANK SEISMIC RESTRAINTS INSTALLATION LAYOUT
CHK'D											
APPV'D											
MFG											
Q.A											
								MATERIAL:		DWG NO.	A3
								WEIGHT:			
								SCALE: 1:25			
										SHEET 1 OF 1	