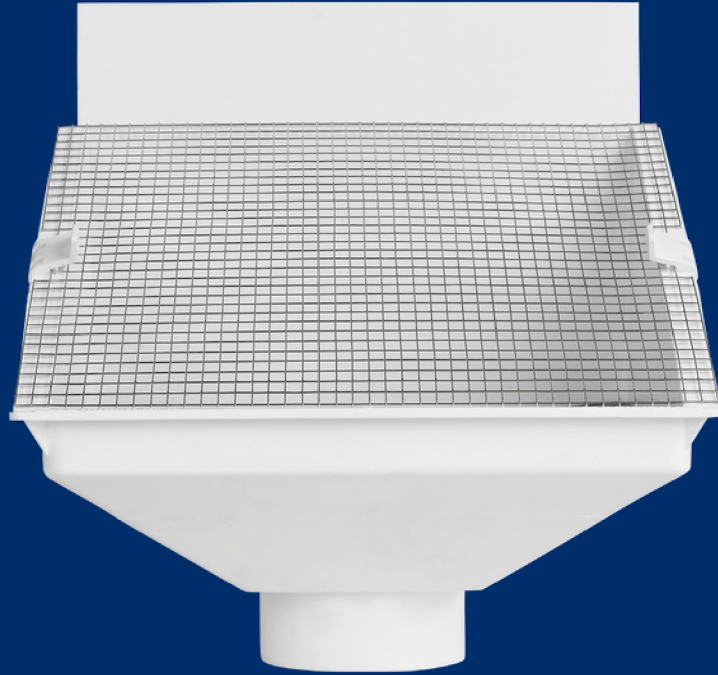


RAIN HARVESTING

by Blue Mountain Co

Leaf Eater® Original



Installation and Specification Guide

PRODUCT DETAILS

Our classic Leaf Eater® Original has stood the test of time to effectively keep leaves and pests out of your rain harvesting system and deliver clean water to your tank.

The dual screen design allows a staged filtration process - large leaves are filtered out first, before the 0.955mm secondary screen deals with tiny debris.

Code	Size	Country
RHLE01	90mm	Australia
RHLE06	100mm	
RHLE15	100mm x 50mm	
RHLE16	100mm x 75mm	
RHLE99	3"	USA
RHLE01	90mm	New Zealand
RHLE06	100mm	
RHLE06	100mm	South Africa
RHLE06	110mm	India

Installation

WHAT'S IN THE BOX?

- Leaf Eater® Original
- Gutter Outlet

TOOLS/MATERIALS YOU MAY REQUIRE

- Marker pen
- Tape measure
- Hole saw or tin snips
- Sealant
- Saw
- Screws or pop rivets
- Screwdriver or pop rivet gun
- Drill
- 90mm or 100mm socket

GUTTER MOUNT

1 - Locate the position at which you will be installing your Leaf Eater® Original rain head. Whether this is directly under your eave or midway down your downpipe, it should be a minimum of 500mm above your tank inlet and tank overflow pipe. Depending on the volume of water being moved and whether or not you're "pushing water" over long runs, the rain head may need to be mounted more than 1.2 metres above the discharge point.

2 - Remove the existing gutter outlet from the roof guttering system.

3 - Hold the Leaf Eater® Original Gutter Outlet against the fascia and against the bottom and rear of the gutter where the new outlet hole is to be. Using the Leaf Eater® Original Gutter Outlet as a template, draw around the inside of the outlet to mark the underside of the gutter for the new hole.

4 - Using a hole saw or tin snips, cut the hole for your new gutter outlet.

5 - Clean the underside of your gutter around the hole.

6 - Your gutter outlet should be oriented so that the angle on the outlet will sit parallel to the angle of your Leaf Eater® Original's primary screen. Place silicone around the underside of your gutter outlet flange and push the gutter outlet up onto the gutter. Use a screw or rivet to secure your gutter outlet in place.

7 - Position the Leaf Eater® Original at the bottom of the Gutter Outlet, next to the existing downpipe. Mark and cut the bottom line and remove this section of downpipe, ensuring the cut edge is clean and smooth.

8 - Remove the screens from your Leaf Eater® Original rain head.

9 - Mount the main body of your Leaf Eater® Original evenly under the gutter outlet by securing it to the fascia with pop rivets or screws, making sure the backing plate fits snug up to the bottom of edge of the gutter but NOT between the fascia and back edge of the gutter.

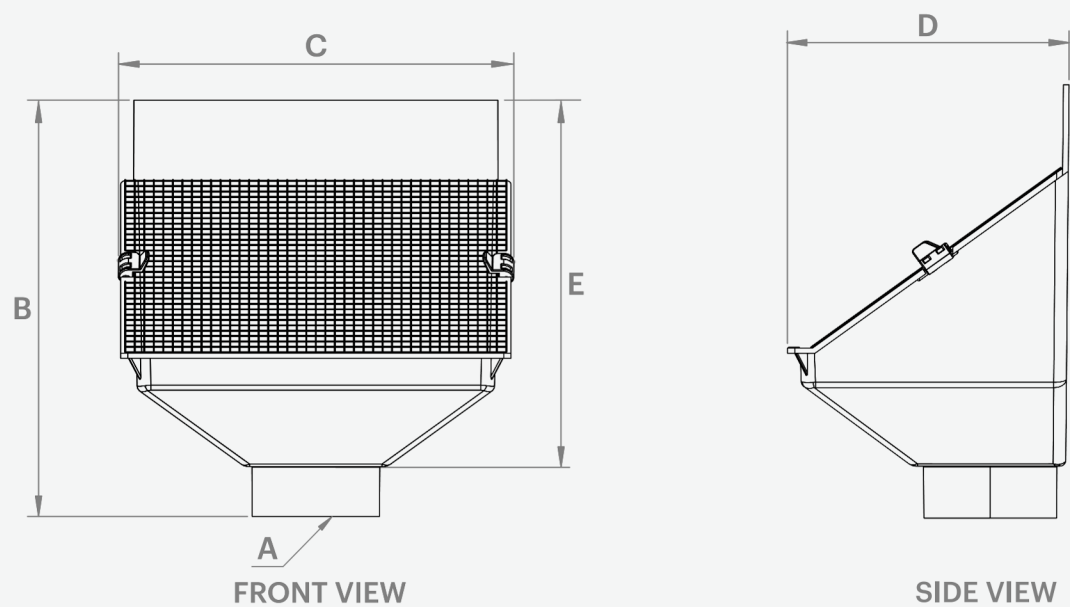
- 10 - Place the secondary, mosquito-proof screen in the main body of your Leaf Eater® Original over the outlet and clip it into place.
- 11 - Replace the primary screen, making sure it fits INSIDE your rain head's front lip, and secure in place with the clips provided.
- 12 - Connect your Leaf Eater® Original to the downpipe using a socket. DO NOT glue it to the pipe. Instead, secure with a screw for easy removal.
- 13 - If desired, you can paint your rain head to match your downpipes and/or building.

EAVE & "MID" MOUNT

- 1 - Locate the position at which you will be installing your Leaf Eater® Original rain head. Whether this is directly under your eave or midway down your downpipe, it should be a minimum of 500mm above your tank inlet and tank overflow pipe. Depending on the volume of water being moved and whether or not you're "pushing water" over long runs, the rain head may need to be mounted more than 1.2 metres above the discharge point.
- 2 - Discard the Leaf Eater® Original Gutter Outlet.
- 3 - Position your Leaf Eater® Original at your planned installation point and mark top and bottom cut lines. Add 50mm to the measurement on the upper end of your downpipe (which will become your entry downpipe) and cut this at a 45 degree angle. This should allow 50mm clearance between the pipe and primary screen. The angle will ensure the end of the pipe is parallel to the screen, helping to direct the water onto the screen more effectively.
- 4 - Cut the bottom section of downpipe at a 90 degree angle. Ensure all cut edges are clean and smooth.
- 5 - Remove the screens from your Leaf Eater® Original rain head.
- 6 - Mount the main body of the Leaf Eater® Original evenly under the entry downpipe, securing it to the wall with pop rivets or screws.
- 7 - Place the secondary, mosquito-proof screen in the main body of your Leaf Eater® Original over the outlet and clip it into place.
- 8 - Replace the primary screen, making sure it fits INSIDE your rain head's front lip, and secure in place with the clips provided.
- 9 - Connect your Leaf Eater® Original to the lower downpipe using a socket. DO NOT glue it to the pipe. Instead, secure with a screw for easy removal.
- 10 - If desired, you can paint your rain head to match your downpipes and/or building.

Product Specifications

Leaf Eater® Original



COUNTRY	CODE	A	B	C	D	E
Australia	RHLE01	90 M	289	275	188	254
	RHLE06	100 M	289	275	188	238
	RHLE15	100 x 50 IP	335	275	188	254
	RHLE16	100 x 75 IP	335	275	188	254
USA	RHLE99	3" SCH40 M	12.28"	10.83"	7.40"	10"
New Zealand	RHLE01	90 M	289	275	188	254
	RHLE06	100 M	289	275	188	238
South Africa & India	RHLE06	110 M	289	275	188	238

All dimensions are in mm unless otherwise stated.

Fitting guide:
F = Female / Socket Fitting
M = Male / Spigot Fitting (Pipe size)
IP = In-Pipe Fitting

Maintenance

Your Leaf Eater® Original's primary screen is mostly self-cleaning, however, from time to time, leaves may become jammed and require removing. This can be done by hand or by removing the primary screen and hosing or brushing it off before clipping it back in place.

Regularly check the secondary, mosquito-proof screen to ensure it is clear and clean. If it requires cleaning, remove it from the rain head and hose or brush it off before replacing it and clipping it back in place.



A common misconception about collecting rainwater is that all you need is a roof, a tank and some rain. This 'tanking' approach cannot always be relied on to deliver the volume – or quality – of water that you require. That is where we can help.

With some thought, your rain harvesting system can provide you with cleaner water and lots of it. Whether you're completely reliant on tank water or wanting to keep the garden green, our simple steps will help you achieve your goal.

The Rain Harvesting approach to rainwater collection involves using tested and proven products to make quality rainwater available for use in and around your property. You don't need much to get started and you will be surprised how easy it is to get the most out of your rainwater system.

[How can we help you?](#)

COMPLIANCE

- AS/NZS 4020:2005 Testing of products for use in contact with drinking water
- enHealth Council
 - Guidance on the Use of Rainwater Tanks
 - Preventing Mosquitoes Breeding
- AS/NZS 3500.3:2003 Plumbing and Drainage – Stormwater Drainage
- HB230:2008 Rainwater Tank Design and Installation Handbook
- Queensland Health Regulations 1996 (Part 8 – Mosquito Prevention)

DISCLAIMER This product specification is not a complete guide to product usage. Further information is available from Rain Harvesting Pty Ltd and from the Installation and Operating Instructions. This specification sheet must be read in conjunction with the Installation and Operating Instructions and all applicable statutory requirement. Product specifications may change without notice. © Rain Harvesting Pty Ltd

RAIN HARVESTING

by Blue Mountain Co

For more information or to find out
how we can help, just give us a call on

+61 7 3248 9600

Or visit our website at

rainharvesting.com