



Promax
CIVIL

Promax Transport Tank Handbook



Freephone 0800 77 66 29 | sales@promaxplastics.co.nz | www.promaxplastics.co.nz

Contents

- 01 Introduction
- 02 Frame Design
- 03 Liquid Surge
- 04 Fabrication Details
- 05 Tank Fitting Locations
- 06 Things that will void Warranty



Freephone 0800 77 66 29 | sales@promaxplastics.co.nz | www.promaxplastics.co.nz

Introduction

Congratulations on your purchase of a Promax Transport Tank

Please read your operators handbook carefully before using your unit.

Ideally suited to water cartage for contractors, farmers, earthmovers, landscapers, potable water carriers and many other applications.

Warnings

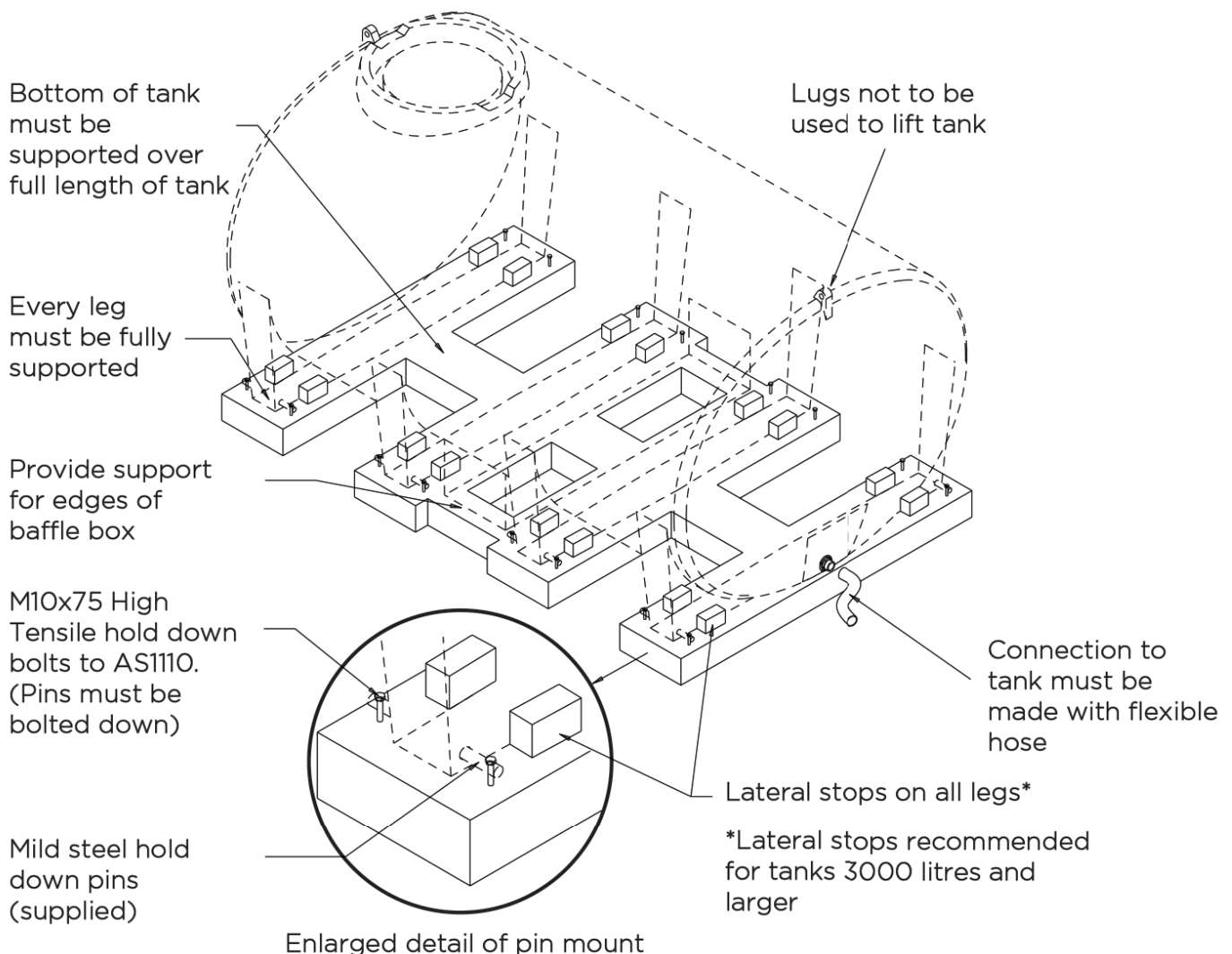
- When mounting to any vehicle ensure that you have read the Vehicle Owner's Manual and that you comply with all the weight restrictions as specified by the vehicle manufacturer, as overloading can cause injury or death
- To ensure your own safety and that of your employees if applicable you must comply with all relevant environmental, work place health and safety legislation and codes of practice
- Ensure tank is firmly secured in an appropriate manner. Where applicable tank mounting may need to be designed /approved by an engineer
- Care should be taken at all times, particularly when operating on rough or steep terrain Drivers should be aware of water surge at all times
- WHS requirements for working at heights must be complied with as applicable
- Personal Protection Equipment must be worn if required
- Improper or careless use of this tank can cause serious injury or death. Minors should never be allowed to use this tank
- Tank is a confined space. Ensure compliance with WHS requirements if entering tank
- You must be in good mental health to operate this tank and not be under the influence of alcohol or any drugs that could impair your vision, physical strength, dexterity, judgement, or other mental capacity



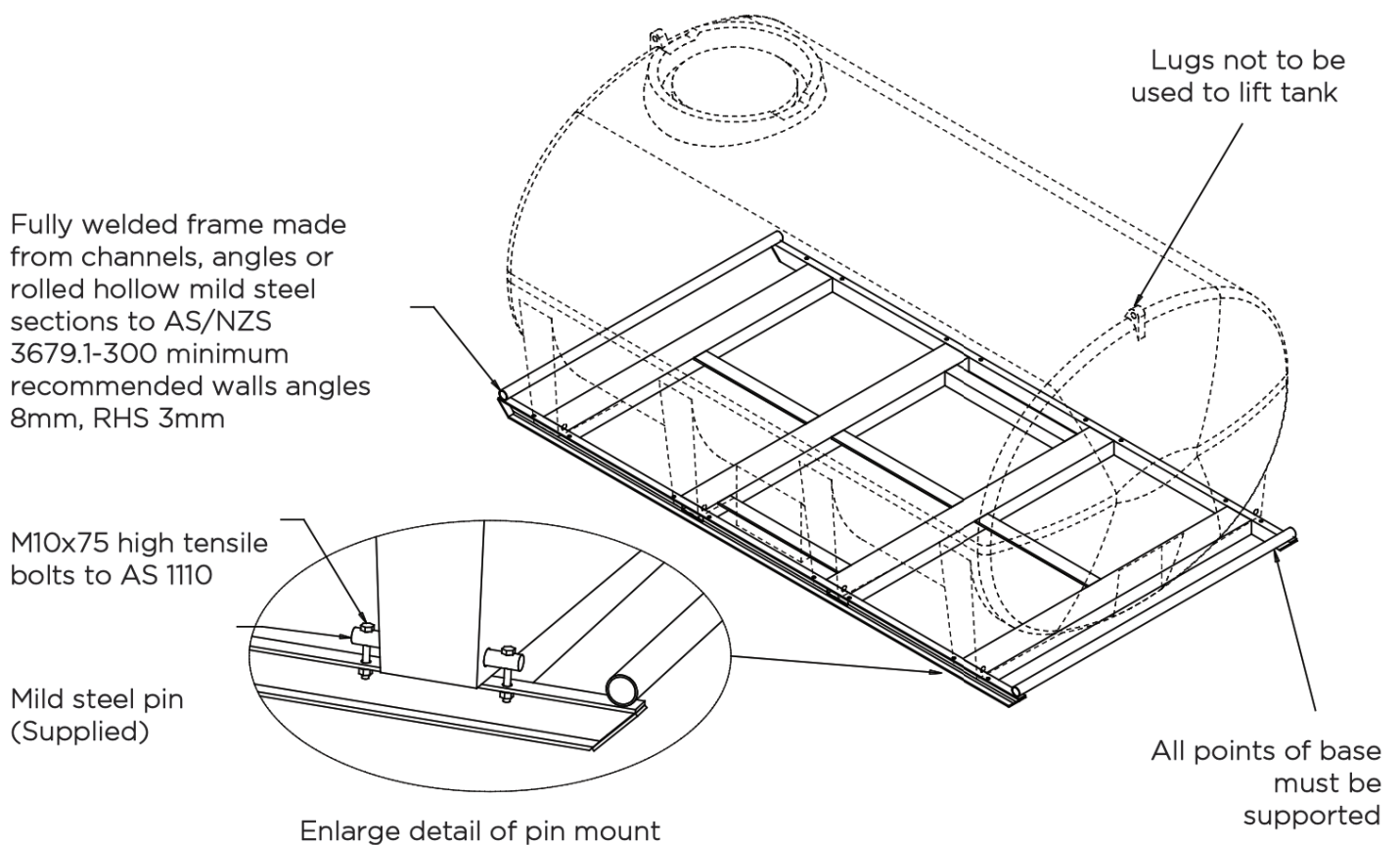
Transport Tank Overview/Frame Design

Tank Warranty is conditional on tank being correctly mounted.

Where applicable mounting may have to be designed and/or approved by an engineer.



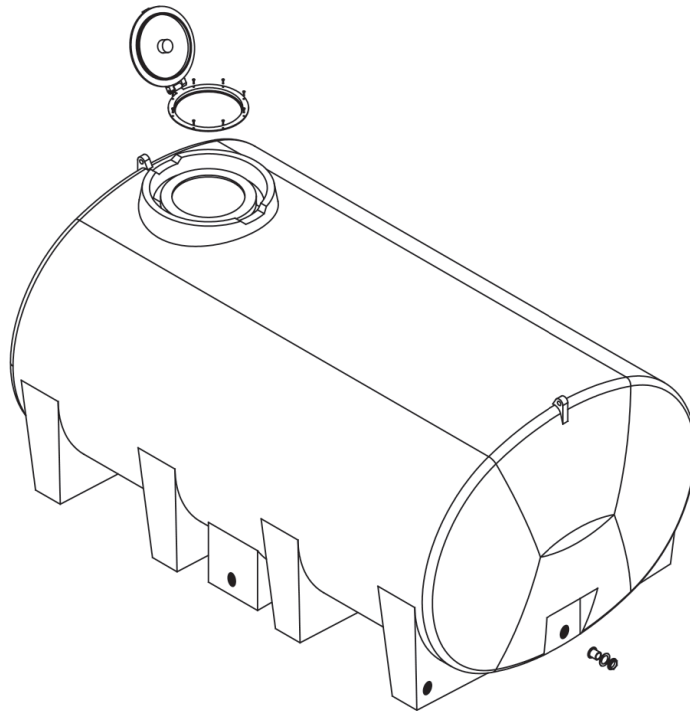
Fabrication details of Tank Skid



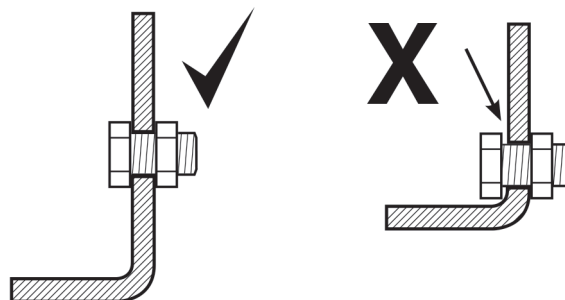
Tank Fitting Locations for Tanks

Placing fittings in locations other than those recommended may result in failure or damage and void warranty. Only use approved fittings: brass, poly, poly welded 1" – 6". Only tanks 10,000 litres and above can accept fittings larger than 4".

- Recommended Tank Fitting Locations for Transport Tanks



Fitting Suggestion



The following things will void warranty.

Abuse

Failure as a result of neglect, such as improper operation. Lack of maintenance or continued operation after discovery of a defect that leads to further damage.

Alterations

Any unauthorized alteration, modification, attachments or unauthorized repair to equipment.

Clean-Up Time

Promax does not pay for cleaning of products, parts or accessories or work area before or after the warranty repair.

Damage

Damages or machine/component failure caused by carelessness/recklessness or accidental damage, improper operation, excessive speed, inappropriate storage or transportation.

Environmental Conditions & Application

Deteriorated or failed components such as o-rings, diaphragms, hoses, seals and connections damaged by corrosive chemicals, dirt and sand, excessive heat, moisture or other environmental impacts. Warranty determination on these type of failures will be made by Promax, only after inspection of the failed component.

Inability/ Unsuitability

In no event shall Promax be liable to any person for indirect or consequential damages or for injury or commercial loss resulting from any use or inability to use any Promax product.

Maintenance

Component failure due to failure to perform maintenance services such as, oil and grease changes/top-ups, failure to clean tanks, pumps filters, nozzles and spray lines. Failure to tighten or replace loose or missing bolts, nuts, fittings, shields and covers.

Non-Genuine Parts

Use of parts other than Promax parts for repair of warranted items will automatically negate any warranty. Warranted components must be replaced with genuine parts.

